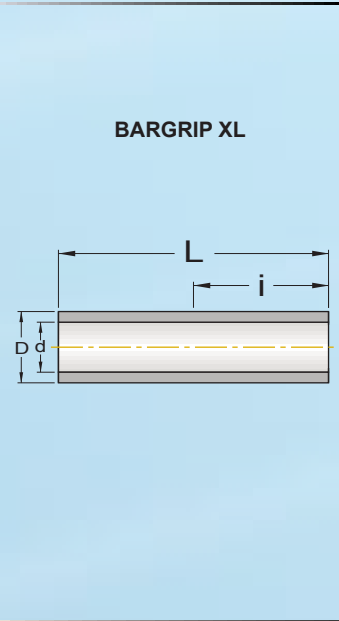
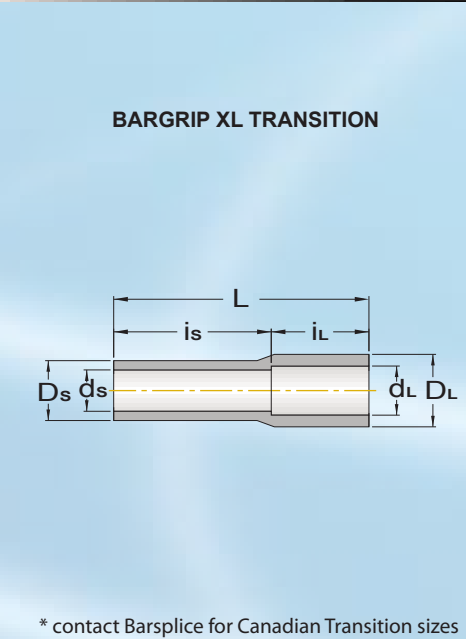


BARGRIP® DATA SHEET — Dimensions and Data [metric units]

[see splicing manual (SM02) for more details]

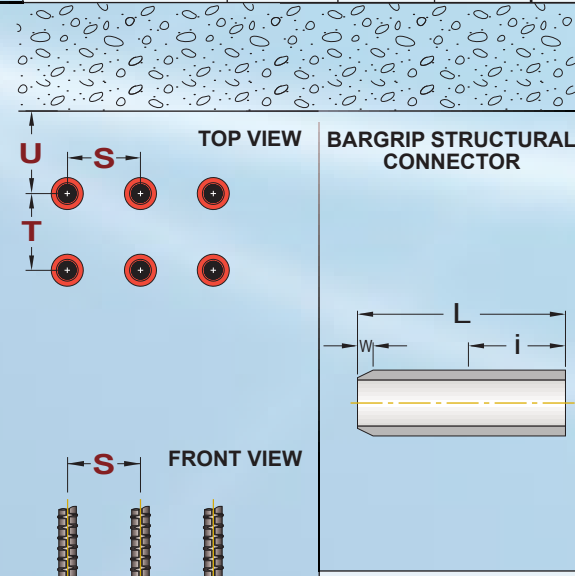
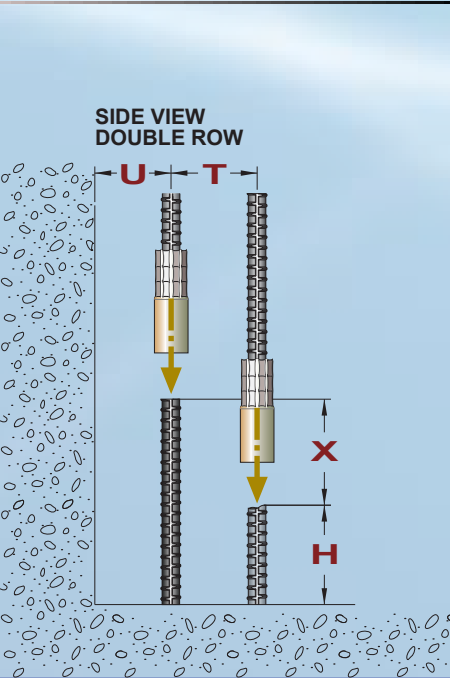


BarGrip XL					Color Code	Outside Dia. 'D' (mm)	Inside Dia. 'd' (mm)	Insertion Bar 'i' (mm)	Press Model	'H' (mm)	'S' (mm)	'T' (mm)	'X' (mm)	'U' (mm)
Rebar Size Metric (US) [Can]	Product Code	Length 'L' (mm)	Weight (kg)											
10 (#3)	3XL	83	0.12	Orange	19	13	41	BG 250	83	41	51	117	57	
12 (#4)	4XL	102	0.18	Pink	24	16	51		95	44	54	127	60	
16 (#5) [15M]	5XL	121	0.31	Red	29	19	60		108	48	57	171	64	
20 (#6) [20M]	6XL	140	0.57	Yellow	35	24	70	BG 400	143	76	108	194	133	
22 (#7)	7XL	159	0.80	Blue	40	27	79		159	76	114	222	140	
25 (#8) [25M]	8XL	178	1.17	Black	44	30	89		171	83	114	241	140	
29 (#9) [30M]	9XL [30M-XL]	191	1.50	Red	49	35	95	BG 750M	191	83	133	292	159	
32 (#10)	10XL	210	2.05	Yellow	56	38	105		203	89	140	318	165	
36 (#11) [35M]	11XL	229	2.60	Blue	60	43	114		219	89	146	333	165	
38 (#12)	12XL	248	3.70	Brown	68	46	124	BG1140M	244	117	174	349	225	
40 (#13)	13XL	260	4.75	Black	70	47	130		255	118	176	366	226	
43 (#14) [45M]	14XL	279	5.40	Pink	75	50	140		264	121	178	385	229	
50 (#16)	16XL	320	7.50	Gray	86	59	160		300	127	191	475	235	
57 (#18)	18XL	356	10.9	Red	97	67	178		330	133	203	528	241	



XL Transition				Rebar Insertion		Outside Diameter		Inside Diameter	
Rebar Size Metric [Can]	Product Code	Length 'L' (mm)	Weight (kg)	'iL' (mm)	'is' (mm)	'DL' (mm)	'Ds' (mm)	'dL' (mm)	'ds' (mm)
16/12	5/4XL	88	0.17	35	55	27	22	19	16
20/16 [20M/15M]	6/5XL	104	0.33	40	64	35	27	24	19
22/20	7/6XL	121	0.55	52	68	40	35	27	24
25/20 [25M/20M]	8/6XL	137	0.78	64	73	44	35	30	24
25/22	8/7XL	137	0.80	64	73	44	40	30	27
29/25 *	9/8XL	156	1.14	73	83	49	44	33	30
32/25	10/8XL	175	1.59	75	100	56	44	38	30
32/29	10/9XL	175	1.60	78	97	56	49	38	33
36/29 *	11/9XL	185	1.79	80	105	60	49	41	33
36/32	11/10XL	185	1.99	83	102	60	56	41	38
38/32	12/10XL	197	2.37	83	114	67	56	46	38
40/32	13/10XL	210	2.77	92	117	70	56	46	38
43/36 [45M/35M]	14/11XL	226	3.20	92	134	73	60	49	41
57/43	18/14XL	294	5.76	111	183	86	73	67	49

* contact Barsplice for Canadian Transition sizes



Rebar Size Metric [Can]	Product Code	Length 'L' (mm)	Weight (kg)	Structural Connector	
				Minimum Insertion* 'i' (mm)	Weld Bevel Length 'W' (mm)
10	3LB	83	0.12	25	5
12	4LB	102	0.18	32	5
16 [15M]	5LB	121	0.31	41	6
20 [20M]	6LB	140	0.56	48	6
22	7LB	159	0.78	57	8
25 [25M]	8LB	178	1.13	64	10
29	9LB	191	1.45	70	11
32	10LB	210	2.00	79	13
36 [35M]	11LB	229	2.50	89	14
38	12LB	248	3.55	97	15
40	13LB	260	4.60	102	16
43 [45M]	14LB	279	5.26	114	17
50	16LB	320	7.30	133	19
57	18LB	356	10.7	156	22

NOTES: For each bar size: Color Code, Outside Diameter, Inside Diameter and 'L' Dimension are the same as for BarGrip XL above.

* Minimum Rebar Insertion equals the swage length. Maximum Rebar Insertion equals the coupler length.

BPI® EQUIPMENT

BG400

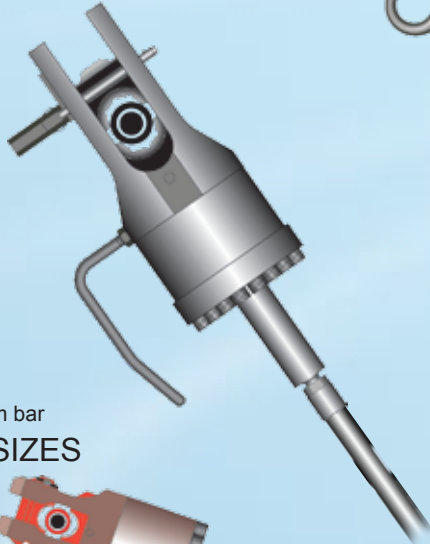
COMPACT FIELD PRESS

25 kg

mostly used on 20, 22, 25 mm bar

BPI® COUPLER SIZES

Ø10 - Ø25mm



BG250

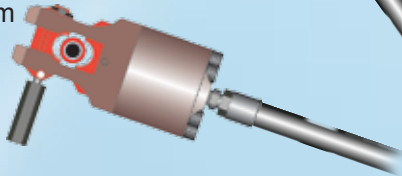
MINI FIELD PRESS

9 kg

mostly used on 13, 16 mm bar

BPI® COUPLER SIZES

Ø10 - Ø16mm



BG750M

MIDSIZE FIELD PRESS

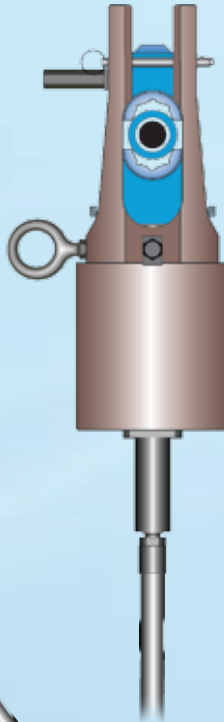
40 kg

mostly used on

25, 29, 32, 36 mm bar

BPI® COUPLER SIZES

Ø16 - Ø36mm



BG1140M

HEAVY-DUTY

FIELD PRESS

95 kg

mostly used on

32, 36, 43, 57 mm bar

BPI® COUPLER SIZES

Ø22 - Ø57mm



BP2600

Bench press for 1/2-swaging all bar sizes

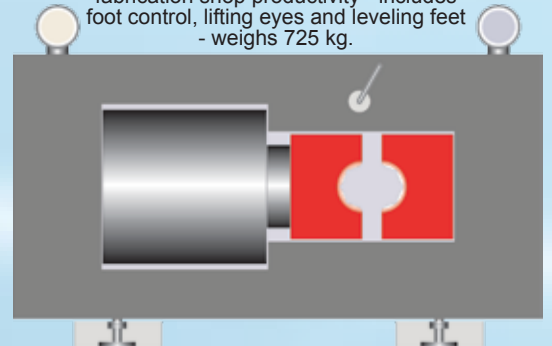
up to 57mm. Double acting cylinder

connected to 10 or 15 hp pump for high

fabrication shop productivity - includes

foot control, lifting eyes and leveling feet

- weighs 725 kg.



BPI® COUPLER SIZES

Ø10 - Ø57mm

BPI® swaging equipment for the installation of coupling sleeves and connectors consists of a hydraulic **PRESS, PUMP** and **HOSE** with suitable swaging **DIES**.

Press models for field swaging range in size from the BG 250 for splicing #3 – 5 rebars (Ø10 – 16 mm), to the BG 1140M for splicing bars up to #18 (Ø57 mm). Each press is provided with a lifting handle and/or lifting eye for support. By a simple change of die set, each press is capable of swaging multiple sizes of coupling sleeve inclusive of BarGrip XL, Transitions and Structural Connectors. For ease of use, dies and coupling sleeves are stamped and color-coded to match.

A hydraulic pump, electrically-driven or gasoline-driven, connects to the press by means of a hose with quick-disconnect ends. The equipment operator depresses a foot control to actuate the system. As the ram of the press extends and pushes the dies towards each other, a portion of the coupling sleeve is forced to deform around the rebar and interlock with the bar profile. When each swaging bite has been completed, a pressure switch, built into the pump, automatically stops the process to allow the ram of the press to retract for the next bite. *After a coupling sleeve has been fully swaged, the operator simply removes the outer die pin and slides the outer die out of the press for convenient removal of the press from around the spliced rebar.*

A Bench Press can be utilized by the rebar fabricator to efficiently 1/2-swage coupling sleeves to rebars ahead of shipping, thereby saving time on the jobsite.

NOTE: In lieu of shop 1/2-swaging with a Bench Press, it may sometimes be appropriate to use a field press such as a BG1140M or BG750M - contact BPI for assistance with your application.

BPI® Equipment is available for lease or purchase. Equipment must be used in accordance with manuals, lease agreements, manufacturers' directions and all safety instructions.

Pump Model	PE 55	PE 400	PG 400
Driver	1 1/2 HP Electric Motor	10 HP Electric Motor	18 HP Gasoline Engine
Power Supply	115V 1-phase	230V or 460V 3-phase	Battery Start
Weight with fluid	66 kg	274 kg	247 kg
Most common use	Rebar Ø10-36mm	Rebar Ø28-57mm	Rebar Ø28-57mm
Attributes	Compact / Maneuverable	Fast / High volume jobs	No power supply required

While the information contained in this document is believed to be accurate at the time of publication, BPI reserves the right to make changes, design modifications, corrections and other revisions as it sees fit, without notice. All products described herein are supplied in accordance with BPI's standard Terms and Conditions of Sale. This document is of a promotional nature only. Aspects of structural design, evaluation of product fitness for use, suitability or similar attributes are the responsibility of others.



BarSplice Products, Inc., 4900 Webster Street, Dayton OH 45414, USA

●Tel: (937) 275-8700 ●Fax: (937) 275-9566 ●E-mail: bar@barsplice.com

Copyright © 2012, Barsplice Products, Inc., "BPI". All rights reserved.

