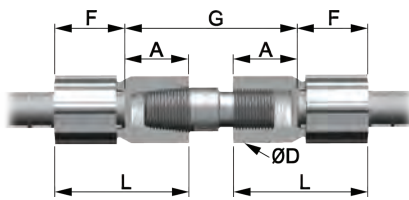
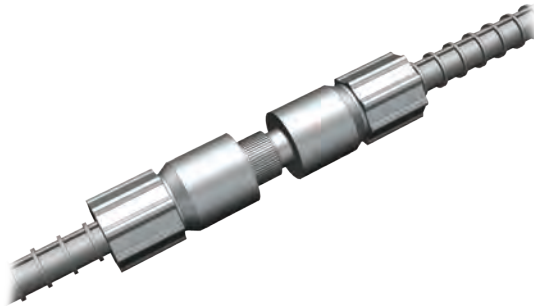


GRIP-TWIST® POSITION ULTIMATE

COLD-SWAGED POSITION COUPLER WITH THREADED STUD

- **CALTRANS ULTIMATE SPLICE** – Meets the dimensional and performance requirements of an ultimate butt splice for the California Department of Transportation.
- **APPLICATIONS** – Where bars are bent and cannot be rotated to engage threads, or when bar lengths are long and impractical to rotate.
- **NO ROTATION OF BARS** – Assembly is completed in the field by unwinding a pre-assembled stud from a Position Assembly into an adjoining Ultimate Female Grip-Twist coupler.
- **DOT PROJECTS AND COMMERCIAL APPLICATIONS** – Bridge decks, piers, ramps, walls, mats, tanks, parking garages – where specifications are ACI 318 Type 1, Type 2 and ASTM A615, A706 Grade 60.
- **ACI 318 FULL MECHANICAL SPLICE** – In-house quality control tested to achieve 125% x specified yield (f_y) strength (Type 1) and 100% x specified tensile (f_u) strength (Type 2) of Grade 60 reinforcing bar.

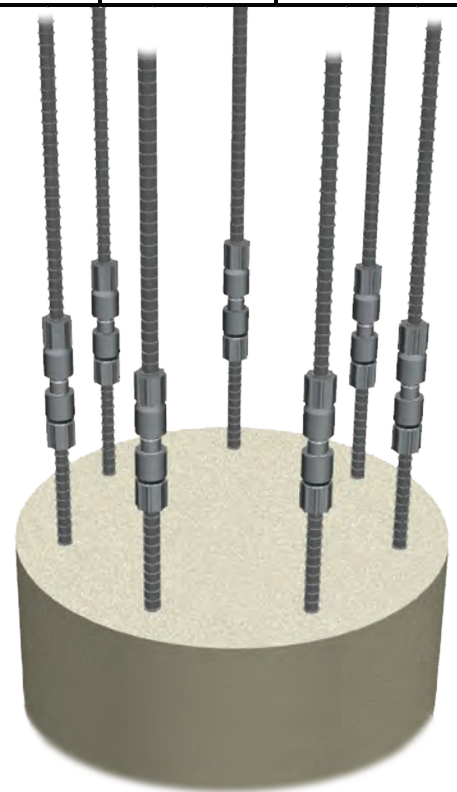


Rebar Size	Color Code	ULT. TAPER GT FEMALE		ULT. GT POSITION FEMALE		ULT. GT POSITION STUD	
		Product Code	Weight (lb)	Product Code	Weight (lb)	Product Code	Weight (lb)
11	PINK	TT11CF	7.05	11CPF	7.10	TT11RP	3.50
14	GRAY	TT14CF	11.4	14CPF	11.6	TT14RP	5.90

Rebar Size	Coupler Diameter "ØD" (in)	Coupler Length (after swaging) "L" (in)	Bar Insertion (after swaging) "F" (in)	Rebar Gap "G" (in)	End Allowance "A" (in)
11	2.88	6.0	3.2	7.3	2.8
14	3.38	7.3	3.9	8.8	3.3

The **Grip-Twist® Position Ultimate** splices meet Caltrans Ultimate Butt Splice requirements including maximum 10 times rebar diameter splice length. This position system is ideal for applications where the reinforcing bar cannot be rotated. Shop swaged coupler components are quickly and easily assembled at the jobsite by rotation of a stud to engage taper threads.

- ▶ Shop swaged coupler to bar end = labor savings
- ▶ Taper threads = easy alignment and assembly
- ▶ Rolled threads = ultimate performance
- ▶ Meets ACI 318 Type 1 & Type 2
- ▶ For use with ASTM A615 and A706 Grade 60 bars
- ▶ No reduction in rebar cross sectional area
- ▶ Quick and easy jobsite installation



While the information contained in this document is believed to be accurate at the time of publication, BPI reserves the right to make changes, design modifications, corrections and other revisions as it sees fit, without notice. All products described herein are supplied in accordance with BPI's standard Terms and Conditions of Sale. This document is of a promotional nature only. Aspects of structural design, evaluation of product fitness for use, suitability or similar attributes are the responsibility of others.



**DOWNLOAD THE FREE BARSPICE APP
AND FOLLOW US ON SOCIAL MEDIA!**



Barsplice Products, Inc., 4900 Webster Street, Dayton OH 45414, USA
Tel: (937) 275-8700 • Fax: (937) 275-9566 • E-mail: bar@barsplice.com

