

SIZES

#3 [10]

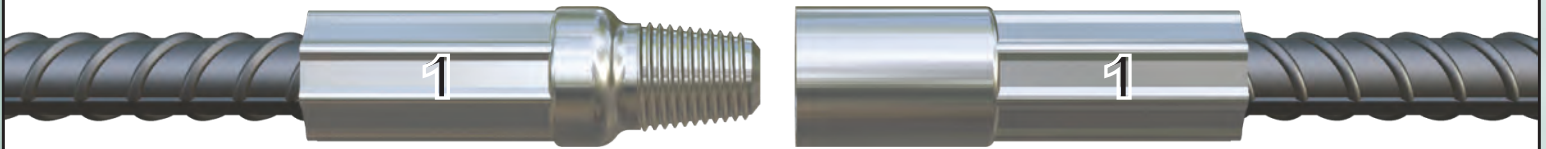
#4 [12]

#5 [16]

#6 [20]

#7 [22]

#8 [25]



ONE BITE PER SIDE (MINIMUM) FROM ROLL LINE*

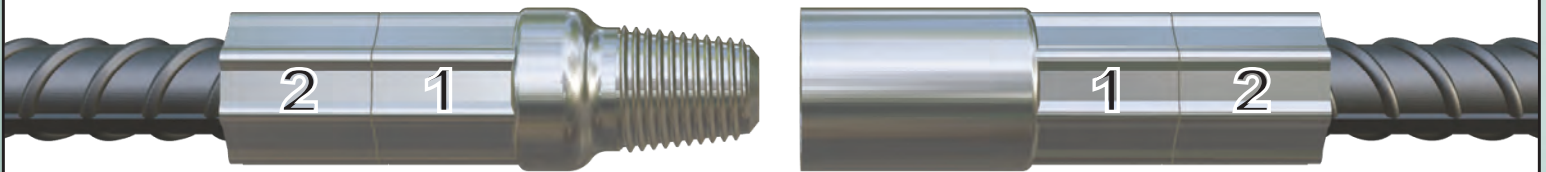
SIZES

#9 [28]

#10 [32]

#11 [36]

#12 [38]

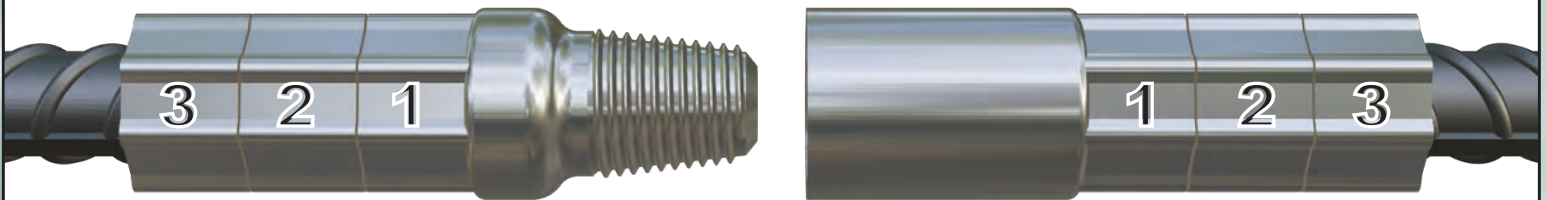


TWO BITES PER SIDE (MINIMUM) FROM ROLL LINE

SIZE

#13 [40]

#14 [43]

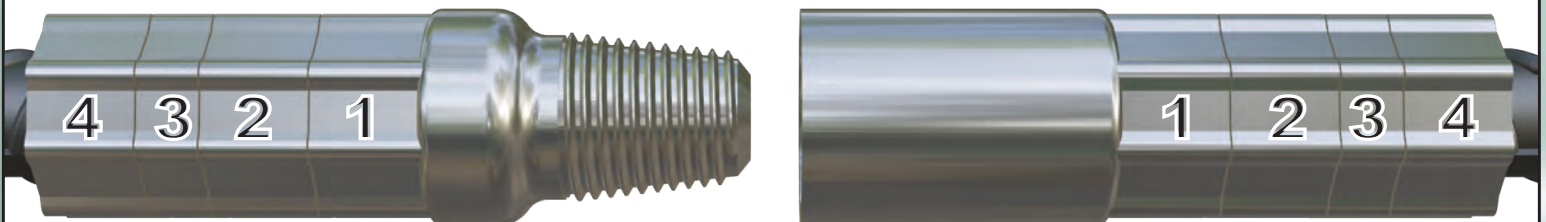


THREE BITES PER SIDE (MINIMUM) FROM ROLL LINE

SIZE

#16 [50]

#18 [57]



FOUR BITES PER SIDE (MINIMUM) FROM ROLL LINE

* If using dies which pre-date Type 2 dies, then 2 overlapping bites are required.

Refer to SM18 - SWAGING AND COUPLER ASSEMBLY INSTRUCTIONS - BPI TAPER THREADED GRIP-TWIST[®] COUPLERS for complete installation procedure, safety & assembly instructions. THIS IS NOT A SUBSTITUTE FOR THE SWAGING MANUAL.

While the information contained in this document is believed to be accurate at the time of publication, BPI reserves the right to make changes, design modifications, corrections and other revisions as it sees fit, without notice. All products described herein are supplied in accordance with BPI's standard Terms and Conditions of Sale. This document is of a promotional nature only. Aspects of structural design, evaluation of product fitness for use, suitability or similar attributes are the responsibility of others.